

# Music Theory

## Worksheet No. 4

(Lesson 29)

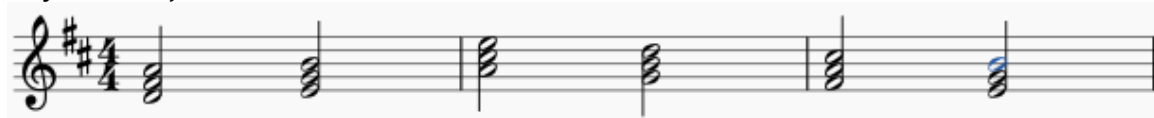
### Part 1: Identifying Root Position Chords

In the following example, use roman numerals to label the root position chords in the key specified.

Key of C Major:



Key of D Major:



### Part 2: Identifying Inverted Chords

In the following example, use roman numerals to label the inverted chords in the key specified.

Key of G Major:



Key of F Major:



**On the next pages are the answers. Try hard to think through all of your answers before you look at the correct answers!**

# Music Theory

## Worksheet No. 4

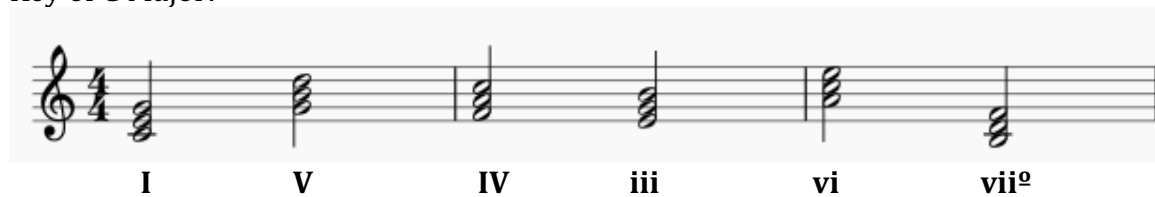
(Lesson 29)

### ANSWER KEY

#### Part 1: Identifying Root Position Chords

In the following example, use roman numerals to label the root position chords in the key specified.

Key of C Major:



I V IV iii vi vii<sup>o</sup>

Key of D Major:



I ii V IV iii ii

#### Part 2: Identifying Inverted Chords

In the following example, use roman numerals to label the inverted chords in the key specified.

Key of G Major:



I ii vii<sup>o</sup> ii iii V

Key of F Major:



IV IV I vi vii<sup>o</sup> V

**Easy? Hard?**

**If that was hard, re-watch the videos again. If it was easy, keep going! It will get harder soon!**